

Sycamore Maple (*Acer pseudoplatanus*)

Also called: Planetree maple

Family name: Maple (Aceraceae)

Native range: Europe and central Asia

NJ Status: Emerging Stage 0- Very rare. It is *highly threatening* to natural plant communities. All detected occurrences should be eradicated.

General:

- Medium to large deciduous tree, 40'-60'
- Oval to rounded outline
- Branching typically dense
- Scaly gray bark, flaking to show orange

Fruit:

- Samaras (winged seeds) are yellow-green
- Develop in drooping clusters (similar to flower)
- Each samara is 1.25-2" long
- Reddish tinge
- Broad spreading wings



Habitat:

- Forest edge, fields, pasture, disturbed areas
- Salt tolerant
- Shade intolerant

Commercial Availability: Yes

Look-alikes:

NOTE: All maples have samaras of various size, color and wing shape.

For additional lookalikes see Fact Sheets for: Japanese maple (*A. palmatum*) and Amur maple (*A. ginnala*).

Norway maple (*Acer platanoides*)

- Widespread invasive tree
- 5 equal-shaped lobes, sharp tothing
- Excretes milky sap when leaf is broken off

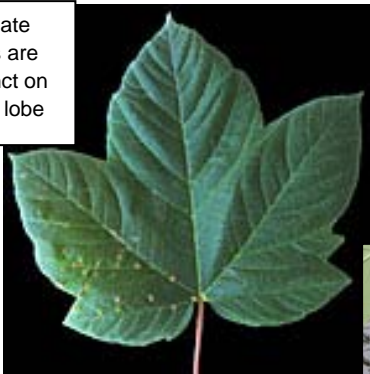


Norway maple

Leaves:

- Opposite, 3"-6" long
- 5 lobes—3 main lobes and 2 smaller
- Coarsely toothed between lobes
- Palmately-veined (spread from center)
- Dark green, leathery above, whitish or reddish underside
- Veins may be fuzzy on the leaf underside
- Autumn foliage is yellowish or greenish brown

Palmate veins are distinct on each lobe



Flowers:

- Yellow-green drooping clusters, 2"-6" long
- Bloom in May
- 20-50 flowers on each stalk



American sycamore (*Platanus occidentalis*)

- Native tree
- Alternate leaves as large as 12"
- Bark is gray flaking to white
- Seeds on a "spike ball"



Sycamore leaves are similar shape to Sycamore maple but extremely large. Bark has distinctive camouflage appearance.