

**Narrowleaf bittercress (*Cardamine impatiens*)**

**Also called:** Bushy rock-cress

**Family name:** Mustard family (*Brassicaceae*)

**Native range:** Europe

**NJ Status:** Emerging stage 3: Common (may be regionally abundant). It is *highly threatening* to natural plant communities. All *newly* detected occurrences should be eradicated.

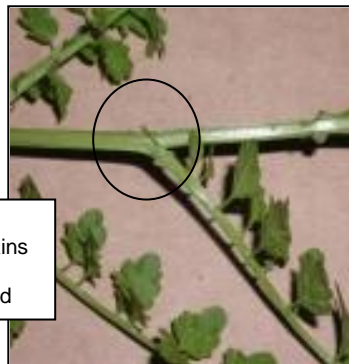
**General description:**

- Herbaceous annual or biennial
- 1<sup>st</sup> year is a rosette (low arrangement of leaves)
- 2<sup>nd</sup> year- matures at about 2"
- Produces abundant projectile seeds



**Leaves:**

- Alternate (off of main stem), compound
- Numerous (6-20) stems with leaflets branching off center stem
- 6-9 pairs of leaflets on each leaf stem
- Leaflets are long and somewhat pointed, shallow lobes
- Narrow pointed extension at base of leaves



Pointed leaf extension remains on plant if leaf stem is removed

**Flowers:**

- White, four-petaled
- 0.1" across
- Cluster of flowers at the top of the plant
- Blooms in May



Seed pods surrounding flower

**Fruit:**

- Small seeds within numerous slender pods
- Pods are "upward growing"
- Seeds are ejected from the pods when ripe (May-August)
- After bearing seed, the plant dies

**Habitat:**

- Forest, edge, stream sides, roadsides
- Prefers part-shade and moist soil, but can tolerate a variety of conditions

**Commercial Availability:** No

**Look-alikes:**

NOTE: **No other** bittercress has the pointed leaf extension as in *C. impatiens*.

**Sand bittercress (*C. parviflora*)**

- Native
- Found on dry slopes

**Pennsylvania bittercress (*C. pennsylvanica*)**

- Native
- Found on wet ground and stream banks

**Hairy bittercress (*C. hirsuta*)**

- Non-native (may be invasive)
- Commonly found in lawns and along streams
- Grows to 12" tall
- 2-4 pairs of leaflets, alternate on leaf stem



**Garlic mustard (*Alliaria petiolata*)**

- Widespread invasive plant
- Simple leaves, triangular shaped
- Similar flowers & seed pods

