

Russian olive (*Elaeagnus angustifolia*)

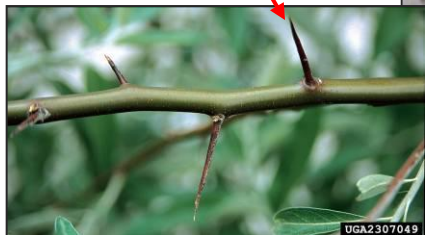
Family name: Oleaster (Elaeagnaceae)

Native range: Asia

NJ Status: Emerging Stage 0. Absent or very rare. It is *highly threatening* to natural plant communities. All detected occurrences should be eradicated.

General description:

- Deciduous shrub to small tree 15'-35' with a suckering habit
- Rounded form with loose branching
- Stems, buds and leaf undersides covered in silvery to rusty scales
- Occasionally thorny



Leaves:

- Alternate, lance-shaped, 1"-3" long, toothless
- Silvery on both sides

Flowers:

- Yellowish inside, silvery outside
- 0.4" long, bell-shaped, fragrant
- Single or in clusters in leaf axils
- 4 petals
- Fragrant
- Blooms in May



Russian olive leaves are silvery on both sides

Fruit:

- Yellow, hard, maturing in September
- Ellipsoid, 0.5" long
- Covered in silvery scales

Habitat:

- Waste ground, old fields, meadows, stream and lake edges
- Often found on sandy, bare mineral soils
- Seedlings shade tolerant



Commercial availability: Yes

Look-alikes:

Autumn olive (*Elaeagnus umbellata*)

- Widespread invasive of meadows and fields
- Shrub or small tree to 12'
- Blooms late May, fruits September-November
- Fruit round to oval, 0.25", red to pink (occasionally orange), soft, juicy, covered in silvery scales
- Leaves silvery below
- Flowers cream colored, fragrant



Autumn olive fruit



Autumn olive leaves are silvery beneath