

European spindletree (*Euonymus europaea*)

Family name: Bittersweet (Celastraceae)

Native range: Eurasia

NJ Status: Emerging Stage 1 - Rare (may be locally common). It is *moderately threatening* to natural plant communities. All detected occurrences should be eradicated.

General description:

- Deciduous shrub or small tree, 12'-30' tall
- Greenish-red twigs, gray-brown older bark



Leaves:

- Opposite, oval-shaped
- Finely toothed leaf margins
- Dull green
- 1-3" long
- Red autumn foliage



Flowers:

- Inconspicuous, 0.5" wide
- Yellow-green
- 4 petal-like parts
- Blooms May-June



flower and fruit structures have four parts

Fruit:

- Four-part, ornamental seed casing opens to reveal red to pink fruits
- Smooth seed casing
- Oval, 0.5"-0.75"
- Matures September-October

Habitat:

- Forests, floodplains, landscaping
- Full or partial shade

Commercial availability: Yes

Look-alikes:

The *Euonymus* species are best differentiated by growth habit and flower and fruit structure.

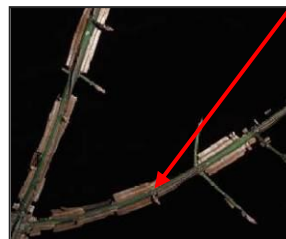
Hearts-a-bursting/strawberry-bush (*Euonymus americanus*)

- Native suckering shrub, 7'
- Moist forests, floodplains
- Green twigs, 4-angled
- 5 part flowers and fruits
- Seed casings bumpy



Burning bush/winged euonymus (*Euonymus alatus*)

- Invasive shrub up to 15'
- Moist forests, landscaping
- 4 part flowers and fruits
- Branches winged or corky



Wintercreeper (*Euonymus fortunei*)

- Evergreen, invasive shrub, vine or groundcover
- Moist forests and landscaping
- Central leaf vein is whitish
- Partially evergreen
- 4 parted flowers and fruits



Running strawberry-bush (*Euonymus obovatus*)

- Shrub or groundcover to 1' tall
- 5 parted flowers and fruits