

**Cutleaf blackberry (*Rubus laciniatus*)**

**Also called:** Evergreen blackberry

**Family name:** Rose (Rosaceae)

**Native range:** Europe

**NJ Status:** Emerging Stage 2- Uncommon (may be regionally abundant). It is *moderately threatening* to natural plant communities. All detected occurrences should be eradicated.

**General description:**

- Deciduous to evergreen
- Spreading shrub that grows in dense thickets
- 2'-6' tall
- Recurved thorns cover stem
- Prickly, reddish stems
- Stems erect when young, arch to the ground as they age



**Leaves:**

- Alternate, compound leaves- may persist through winter
- Each with 3-5 leaflets, deeply divided with jagged thorny tips
- Green above, pale and hairy beneath
- Curved thorns on leaf stem



**Flowers:**

- Showy
- White to pink with 5 petals
- Borne in clusters
- Blooms June-early August



**Fruit:**

- Juicy black berry, ~1" long
- Fruit is an aggregate (many tiny fruits)
- Adheres to central core when removed
- Berry is red when immature



**Habitat:**

- Edges and clearings
- Requires full sun and well drained soil

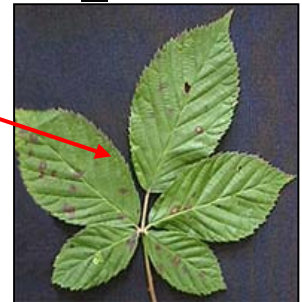
**Commercial Availability:** Yes

**Look-alikes:**

**Blackberry & Raspberry (*Rubus* sp.)**

Other *Rubus* have thorns and similar fruits. *R. laciniatus* is the only local *Rubus* with deeply divided leaves.

- *R. allegheniensis*- blackberry
- *R. odoratus*- flowering raspberry
- *R. phoenic*- wineberry (invasive)
- *R. idaeus*- red raspberry
- *R. occidentalis*- black raspberry



**Rose (*Rosa* sp.)**

- Thorny shrubs, native or invasive
- Generally with smaller leaves than *Rubus*
- Fruit is a red drupe (smooth with 1 hard enclosed seed)

