

Chinese, Siberian and English Elms (*Ulmus sp.*)

Family name: Ulmaceae (Elm)

General description:

Chinese, Siberian and English elms are all deciduous trees. ID can be difficult among them and the native elms. All elms share the following characteristics:

Leaves:

- Alternate & simple, often double-toothed
- Usually asymmetrical at the base
- Dark green

Flowers:

- Inconspicuous, lacking petals, often greenish

Fruit:

- Smooth, flattened, round samara

Habitat:

- Very adaptable

Commercial availability: Yes

Chinese elm (*Ulmus parvifolia*)

Also called: Lacebark elm, drake elm

Native range: Asia

NJ Status: Emerging Stage 0- Very rare. It is *highly threatening* to natural plant communities. All detected occurrences should be eradicated.

General description:

- 30'-60' tall, near evergreen in mild climates
- Slender trunk & crown
- Bark is **exfoliating and flakey** (combinations of gray, green, orange, tan & red-brown)

Leaves:

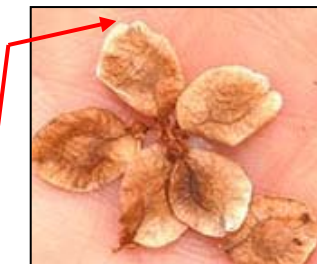
- **Small**, elliptical, 0.8"-2" long, 0.5"-1" wide
- Unequal leaf base (bottom of leaf does not touch stem in same place)
- Single-toothed (some double-toothed)

Flowers:

- Small, tight green clusters within leaf axils
- **Blooms August-September (after leaf out)**

Fruit:

- Samaras, initially lime green, mature into a deep russet (October)
- Seeds nearly filling samara, notched at the tip



Chinese elm

Habitat:

- Meadow, prairie, landscaping
- Full to partial sun, well drained



Siberian elm (*Ulmus pumila*)

Also called: Chinese elm, dwarf elm

Native range: China and Siberia

NJ Status: Emerging stage 1- Rare (may be locally common). It is *highly threatening* to natural plant communities. All detected occurrences should be eradicated.

General description:

- 50'-70' tall
- Branches hang down loosely; tend to break off with high wind
- Shallow furrows in bark
- Slender branches, open & rounded crown
- Twigs nearly hairless, small dark **round bud**

Leaves:

- **Small**, 1"-2.5" long, 0.5"-1.25" wide
- Single-toothed
- **Leaf base is equal** forming a V shape
- yellowish-brown in fall

Flowers:

- **Blooms March-April (before leaf out)**
- Small pale green clusters (stemless, not pendulous)

Fruit:

- Pale green turning brown
- Round, broadly winged
- Deeply notched at tip

Habitat:

- Dry-moist prairies, stream banks, grasslands, roadsides, landscaping



Equal leaf base of Siberian elm



Siberian elm

Chinese & Siberian elm both have leaves smaller (<3") than the other elms but Chinese elm flowers & fruits in the fall.

Chinese, Siberian and English Elms (*Ulmus sp.*)

English elm (*Ulmus procera*)

Also called: Cork Elm

Native range: Europe

NJ Status: Emerging Stage 0- Very rare. It is *highly threatening* to natural plant communities. All detected occurrences should be eradicated.

General description:

- Large tree, to 130'
- Bark is grayish-brown & flaking
- Old growth has **corky ridges**
- Twigs reddish-brown
- Buds egg-shaped

Leaves:

- May be **nearly rounded**
- **Large**, 3"-5" long, 1"-3" wide, double-toothed
- Rough above, downy beneath
- Asymmetrical at base
- Wooly tufts in vein axils

Flowers:

- **Blooms February-March, before leaf out**
- **Reddish-purple**, clusters borne on shoots

Fruit:

- Light brown (reddish in area covering seed)
- Round & shallowly notched
- Ripen May-June

Habitat:

- Meadow, forest, landscaping
- Full to partial sun, well drained



English elm



5396261



Reddish-purple flowers of English elm

© R.A. Seelig

American Elm (*Ulmus americana*)

- Native, deciduous tree, 60'-80' tall
- "V"-shaped form, strongly arched above, numerous slender branches
- **Leaves 3"-5" long, 1"-3" wide**, double-toothed
- Unequal heart-shaped leaf base
- Flowers in early spring before leaf out
- Bark is **not flakey**
- Tip of bud is pointed
- Tufts of hair in axils of leaf veins
- Yellow cream samaras, narrowly winged, deeply notched, **hairy edges**, 0.5" wide
- Flowers small, in drooping clusters



American elm

Slippery Elm (*Ulmus rubra*)

- Native, deciduous tree, to 65'
- **Leaves 4-8"**, double-toothed, thick, stiff & sandpapery
- Unequal heart-shaped leaf base
- Winter buds densely covered with **red-brown hairs**
- Young branches are hairy
- Papery samara, **0.75"-1" wide**
- "Slippery" inner bark
- Deeply furrowed bark



Slippery elm

